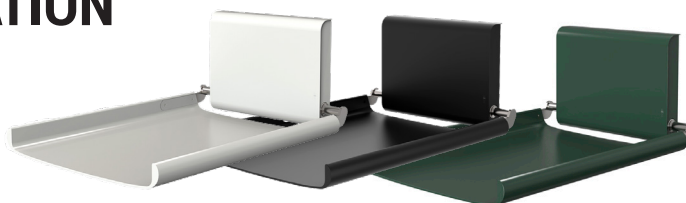


# BJÖRK BABY CHANGING STATION

## 3200/3205/3210

Wall mounted  
Powder coated aluminium  
2-year warranty



The BJÖRK baby changing station has been awarded several prestigious design prizes. With its design approach marked by purism and practical use, it goes far beyond familiar forms by creating a highly refined aesthetic. The baby changing station meets the highest demands, offering a great deal of comfort for both infants and parents.



reddot design award  
best of the best

### Technical data

Technical data	Metric	Imperial
Type	<b>BJÖRK BABY CHANGING STATION</b> Prod. No.: 3200, 3205, 3210  Baby changing station	<b>BJÖRK BABY CHANGING STATION</b> Prod. No.: 3200, 3205, 3210  Baby changing station
Width	552 mm	21.73"
Depth (folded up)	100 mm	3.93"
Depth (folded down)	751 mm	29.56"
Height (folded up)	782 mm	30.78"
Height (folded down)	322 mm	12.67"
Changing surface	L: 700 mm x B: 510 mm	L 27.55" x W 20.07"
Load capacity	80 kg	176.37 lb
Recommended working height	950 mm above floor	37.40" above floor
Force required to open	~25 N; to close: ~25 N	~25 N; to close: ~25 N
Net weight	17 kg	37.47 lb
Tender text	Baby changing station. Powder coated steel wall unit, powder coated aluminum profile and electro-galvanised steel axle and levers. Load capacity: 80 kg. Net weight: 17 kg.	Baby changing station. Powder coated steel wall unit, powder coated aluminum profile and electro-galvanised steel axle and levers. Load capacity: 176.37 lb. Net weight: 37.47 lb.

### Application

BJÖRK, a true breakthrough in commercial bathroom products. The elegant design line is suitable for all types of public toilets.

### References

Offices and administration, shopping malls, restaurants, hotels, airports, sports facilities and public swimming pools, schools, public institutions and cultural centres.

### Standard colour

Prod. No.: 3200, RAL 9003, white, gloss 75.  
Prod. No.: 3205, RAL 9005, black, gloss 7-12.  
Prod. No.: 3210, RAL Classic colours.

### Materials

Changing surface: Powder coated aluminium profile.  
Wall unit: Powder coated steel plate.  
Axle and levers: Electro-galvanised steel.

### Installation

Wall mounting. The recommended working height above floor: Approx. 950 mm / 37.40".

### Function

Torsion springs ensure the smooth and easy opening and closing motion of the unit.

### Certification

- EN 45545-2, HL3
- EN 12221-1 + A1
- TÜV Nord Certification
- DS/EN 61373:2010
- EN 71-3:2013 + A1:2004

